

PHARMACY

BUTTERCUPS UNIFORMS



NEVER COMPROMISE
ON STYLE

www.buttercupsuniforms.com



ABOUT US

Firmly established as a leading supplier of uniforms for over 30 years, Buttercups is delighted to present to you its latest range of top-quality and stylish uniforms for professionals working in pharmacies and other healthcare settings. Our uniforms are smart, professional and comfortable, ideal for busy healthcare professionals who need a uniform that works as hard as they do.

Our fabrics are carefully chosen for their durability and ease of care. Each style can be washed in the machine and require little upkeep to look as good as new month after month. They are also designed to be flattering on every body type and incredibly comfortable to wear – even after hours on your feet. Our deep understanding of the needs of busy healthcare professionals has led us to add little details to many styles such as practical pockets and material that moves with the body and feels cool on the skin.

Whether you have a small or large business, we can help you and your staff look and feel smart and professional each and every day. We can offer you:

- Personalised embroidery service
- Discounts for bulk orders on some styles
- Worldwide fast delivery
- Secure payment systems

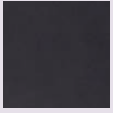
Please browse our latest collection for healthcare professionals in this brochure; more information can be found on our website – www.buttercupsuniforms.com – or call:



Ireland: 01 219 0215
UK Low-Call: 0844 9100865
International: +353 (0) 1 219 0215

B620

SWATCHES:



Black



Grey



Purple



Navy

*All Bistretch Fabric



B620DR
SWATCHES:



Purple



Grey



Black

*All Bistretch Fabric



B320
SWATCHES:



Grey



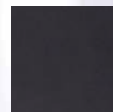
Sapphire



Plum



Black



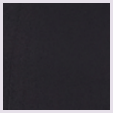
Black

*Grey, Sapphire,
Plum, Emerald:
Linen look
Black:
Bistretch



B428

SWATCHES:



Black



Grey



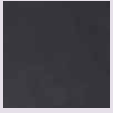
Navy

*All Bistretch

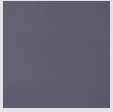


B016

SWATCHES:



Black



Grey



Purple



Navy

*All Bistretch



B212

SWATCHES:



Black



Navy



White



Grey

*All Bistretch



B778

SWATCHES:



Black



Navy

*All Mini Matt

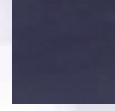


B215

SWATCHES:



Black



Navy

*All Bistretch



B709

SWATCHES:



Navy



Black

*Mini Matt Fabric



B035

SWATCHES:



Lilac



Grey



Sapphire



Emerald

*Linen Look Fabric



B215LS
SWATCHES:

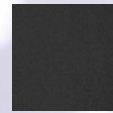


Black

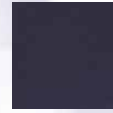
*Black Bistretch



B778LS
SWATCHES:



Black



Navy

*Mini Matt Fabric



ORDERING

Orders may be made by phone, post, email or through our website. If ordering special items by phone, follow up written confirmation is also required. All orders received through our website will receive a confirmation of order. This will normally be sent by email. Please note that you must receive this confirmation before order processing begins.

Delivery Times:

Items in stock are dispatched within 2 days of receipt of order (excluding orders with embroidery). We send out all orders only when all items are in stock to help reduce our carbon footprint and to prevent waste from excess packaging. In-stock items are delivered within 2-3 working days in Ireland & 3-7 working days in UK & Europe. International orders are delivered within 7-10 working days. For all other stock, special or bulk orders, please allow 2-4 weeks. Please contact our office for information on stock levels. Parcels require a signature on delivery.

Prices:

All prices exclude VAT, postage and packing. VAT of 23% in Ireland.

Payment:

We accept payment by Bank Transfer, postal order or credit/debit card. Garments will not be dispatched until full payment is received. All orders placed through the website are payable via credit/debit card. Postal orders should be made payable to Buttercups Uniforms. Prices are subject to VAT and VAT charges.

Postage & packing charges:

Ireland (plus VAT): €4.75 (1-20 items) For orders placed through the website.

Returns:

Uniforms may be returned for an exchange or refund within 21 days of receipt of your order. Items that have been worn / washed / embroidered / custom made may not be returned. Please be advised that we are not responsible for return postage. For your own security, we recommend that parcels be posted using recorded delivery. We regret we are unable to accept liability for goods lost in transit back to us.

**SEE OUR WEBSITE FOR OUR FULL TERM AND CONDITIONS
ALL PRICES EXCLUDE VAT**

LOGO EMBROIDERY

Minimum charge **€5.00/£5.00** per item – see order form for lettering available. Lettering will be positioned on the left hand side of garment unless otherwise requested. For a free quotation on specialised logo, please upload your logo directly or email a copy to us at info@buttercupsuniforms.com (in jpeg format).

Buttercups

Buttercups

Buttercups

Buttercups

B230 SWATCHES:



Black



Grey



Purple

*All Bistretch





Suite 401 Kefron House, Deansgrange Business Park,
Deansgrange, County Dublin, A94 P9F5

Dublin Tel: 01 219 0215 | **UK Lo-Call:** 0844 9100 865 | **International:** 00 353 1 219 0215

info@buttercupsuniforms.com | www.buttercupsuniforms.com